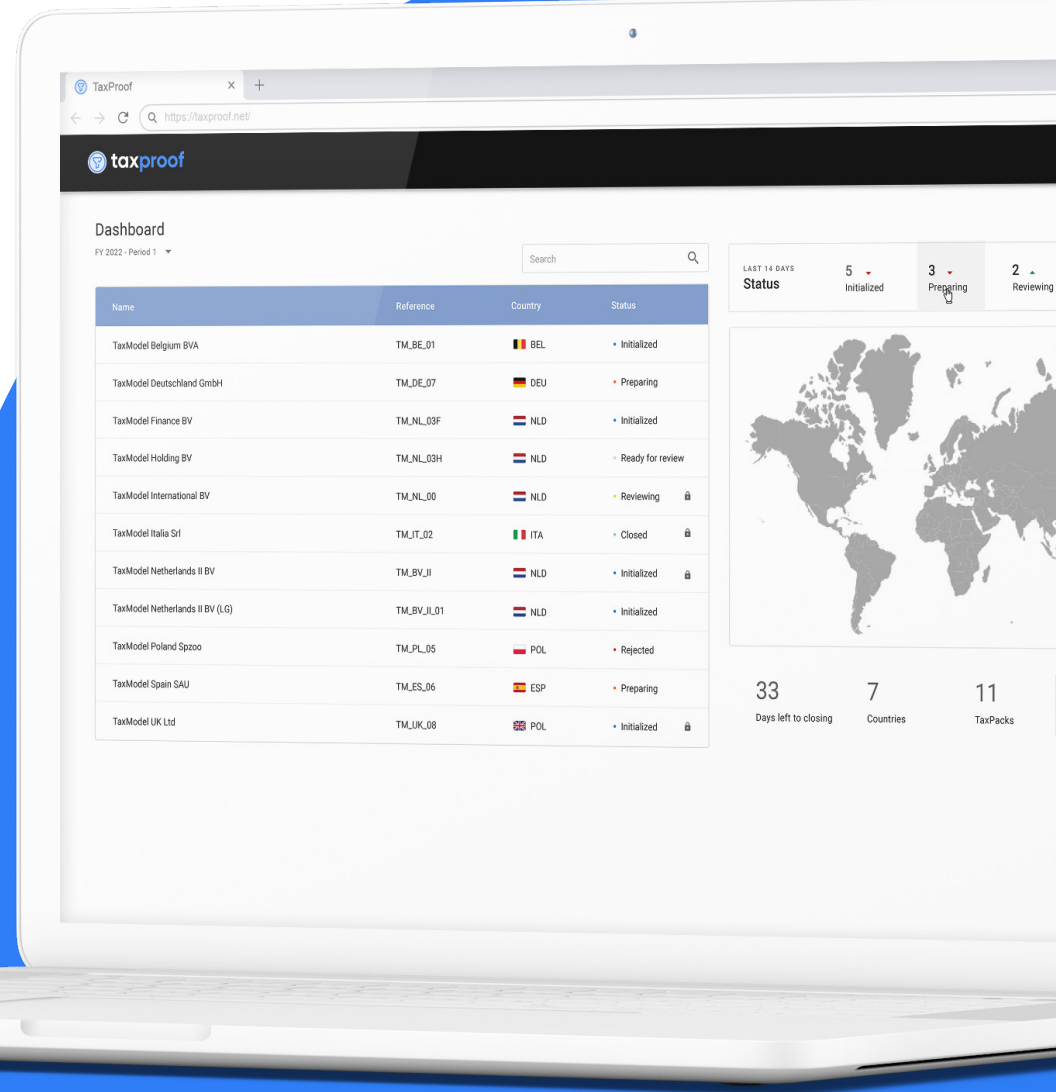




Tax accounting made easy

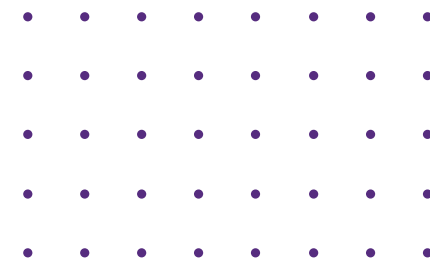




intro

Tax accounting made easy

Focus on harnessing your tax data and uncover critical insights that will support strategic decision-making within your direct tax control framework. Streamline your tax activities and gain more confidence in your data.

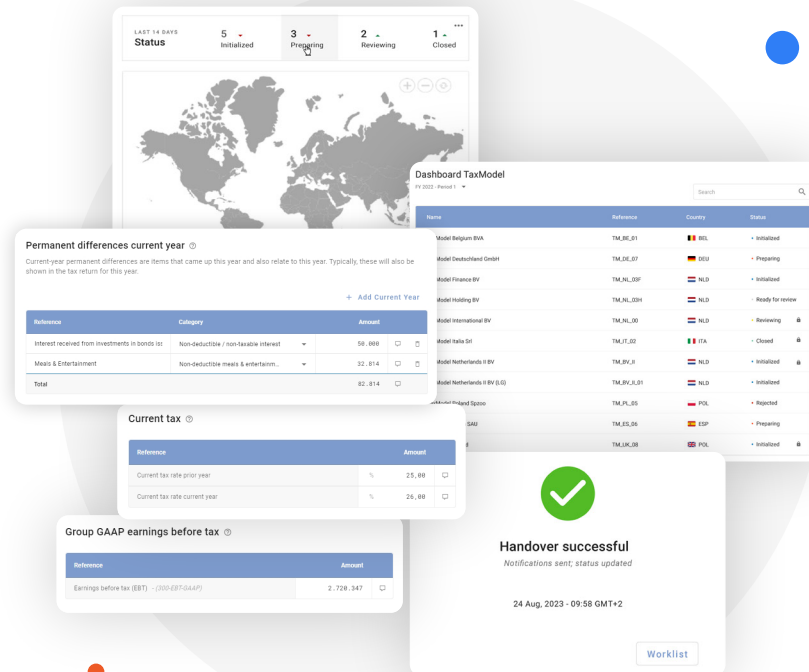


features



Bring speed and insights to your Tax Reporting process

TaxProof offers a solution for easing the tax accounting-related workflows for companies ranging from small to large-cap, while reducing the operational costs and risks.



Tax accounting made easy

TaxProof funnels and simplifies the key steps involved in the tax accounting process, such as data gathering, data entries, audit trailing and consolidation, allowing you to focus on the most important part of the process : the tax position analysis.

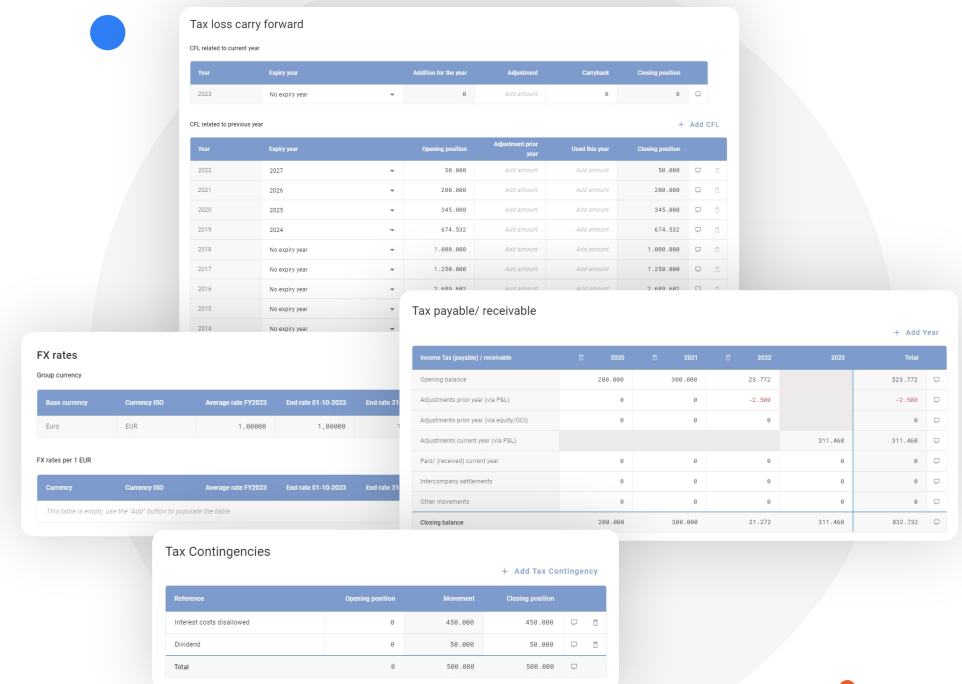
- Setup the tax provisioning files within minutes for all entities.
- Detailed overview with automated consolidation of tax packs in group currency
- Tax Reporting packs that are adapted to the complexity of the entity
- Extensive audit trail functionality
- Intuitive user guide to help onboard users



Reduce the risk of human error

TaxProof enforces process consistency, while reducing the risk of human error. TaxProof provides continuous oversights of the status, users, and the tax position at both the reporting entity as well as consolidation levels.

- User and status management feature
- Automated data roll forwards and FX conversions
- Positions from prior periods are locked
- Continuous monitoring of the tax position impact
- Establish a process oriented tax accounting practice across your organization



Tax loss carry forward

CFL related to current year

Year	Expiry year	Addition for the year	Adjustment	Carryback	Closing position
2023	No expiry year	0	Add amount	0	0

CFL related to previous year

Year	Expiry year	Closing position	Adjusted prior year	Used this year	Closing position
2022	2027	58,000	Add amount	Add amount	58,000
2021	2026	200,000	Add amount	Add amount	200,000
2020	2025	345,000	Add amount	Add amount	345,000
2019	2024	674,532	Add amount	Add amount	674,532
2018	No expiry year	1,000,000	Add amount	Add amount	1,000,000
2017	No expiry year	1,250,000	Add amount	Add amount	1,250,000
2016	No expiry year	2,489,403	Add amount	Add amount	2,489,403
2015	No expiry year				
2014	No expiry year				

FX rates

Base currency	Currency ISO	Average rate FY2023	End rate 01-10-2023	End rate 31-10-2023
Euro	EUR	1,00000	1,00000	

Tax payable/ receivable

Income Tax (payable) / receivable	2020	2021	2022	2023	Total
Opening balance	200,000	300,000	23,772		523,772
Adjustments prior year (via P&L)	0	0	-2,500		-2,500
Adjustments prior year (via equity/OCI)	0	0	0		0
Adjustments current year (via P&L)				311,468	311,468
Paid/ (received) current year	0	0	0	0	0
Intercompany settlements	0	0	0	0	0
Other movements	0	0	0	0	0
Closing balance	200,000	300,000	21,272	311,468	832,732

Tax Contingencies

Reference	Opening position	Movement	Closing position
Interest costs disallowed	0	450,000	450,000
Dividend	0	50,000	50,000
Total	0	500,000	500,000

Data entry, assessment and reporting in one environment

Replace complex, time-consuming Excel spreadsheets and manual labor with smart data collection, assessment, reporting and analytics features.

- Import and export data with smart Excel plug-ins or APIs
- Knowledge management
- Extensive audit trail functionality
- Built-in communication between users within the system

P&L tax

Earnings before tax	Gross amount	Tax Amount	Rate rec
Earnings before tax	2,728,347	787,298	% 26.88
Permanent differences	82,814	21,532	% 0.79
Permanent differences not compromised in a...	0	0	% 0.00
Temporary differences	348,192	98,538	
Taxable income	3,151,353	819,352	
Tax loss carry forward	-3,136,177	-815,486	
Total taxable income	15,176	3,946	

Current tax	Tax amount	Rate rec
Current tax before CFLs, Tax credits, WHT & AMT	3,946	
Tax credits	0	% 0.00
WHT	0	% 0.00
AMT	0	% 0.00
Current tax after CFLs, Tax credits, WHT & AMT	3,946	

Current tax effects	Tax amount	Rate rec
Current tax adjustments (current year)	0	% 0.00
Current tax - current tax in equity (current year)	0	% 0.00
Tax contingencies	508,888	% 10.38
Current tax - permanent differences (prior year)	2,588	% 0.89

Deferred tax

Reference	Closing position	Deferred tax movement	Current year	Change in tax rate	Prior year	PPA	Other	Other prior year	Opening position
Tax losses carry forward	1,552,284	-895,332	-794,844	0	-282,288				2,538,415
Tax credits	513,888	0	0						513,888
Withholding tax	0	0	0						0
Alternative minimum tax	0	0	0						0
Temporary differences- CTA	64,888	-18,882	-18,882	0	0	0	0	0	74,558
Temporary differences- DTL	-178,947	93,942	93,942	0	0	0	0	0	-284,889
Total	1,959,285	-902,472	-700,902	0	-282,288	0	0	0	2,861,676

Current year movement for TaxModel goodwill

Enter current year book and tax

Position	Book	Tax	Difference
Opening 01-01-2023	1,859,555	0	1,859,555
Closing 31-01-2023	683,787	0	683,787
Movement			-375,768

Subdivide the current year movement amount

Movement bucket	Movement amount
Year total movement	-375,768
Relating to prior year	0
Relating to PPA	0
Relating to other current year	0
Relating to other prior year	0
Relating to current year movements	-375,768





pricing

Find a plan that's right for you

Everything you need to streamline your tax activities and to have more confidence in your data, while reducing your operational costs and risks. Not sure which plan to go for? Talk to our Tax Technology experts today, [schedule a brief check-in](#).

Premium

On Request

- ✓ Unlimited reporting units
- ✓ Unlimited users
- ✓ Security essentials
- ✓ Standard support
- ✓ In-tool training and onboarding
- ✓ Excel plug-in
- ✓ SSO (single sign on)

[Start Free Trial](#)

Try TaxProof, 100% free,
automatic cancelation

Enterprise

On Request

- ✓ All of Premium
- ✓ API
- ✓ Enterprise Control & Security
- ✓ Premium Support
- ✓ Account Manager
- ✓ TaxAcademy Training
- ✓ Onboarding reporting units

[Start Free Trial](#)

Try TaxProof, 100% free,
automatic cancelation





about

Simplified tax compliance for everyone!

We are here for the tax professionals who are on a mission to scale-up their practices, who hate doing repetitive workstreams manually, who believe in collaboration, want to step up their quality and leverage their resources, and who dare to stand out as innovators.

Over the past 10 years, we have serviced hundreds of clients, ranging from smaller intermediaries to some of the largest boutique firms, law firms, corporate service providers, accounting firms, and multinationals.

taxsuite, making tax transparent

We are working towards having a full suite of affordable standardised software solutions for international tax professionals. Solutions that reconstruct the tax concept to make it transparent. How? By showing that tax mechanics are actually very similar globally

and by providing in-house tax support through coaching and by training people to become experts. We continuously focus on increasing business intelligence and transparency by ensuring our technology is beautifully designed, simple to use, and user-friendly.



About TaxModel



let's get started

Join our journey to Tax Advisory 2.0!

If you have any questions about TaxProof, or if you would like to discuss your current compliance process, our tax and IT professionals are here to help.

[Book a Meeting](#)